

TECHNICAL DRAWINGS & SPECIFICATIONS

COMMANDER® 500

PORTABLE DAVIT CRANE

CONFIGURATIONS

Model	Description	Approx. Ship Wt.	
		(lb)	(kg)
Popular Configurations			
5PT5-M1	up to 650 lb capacity with M4022PB-K spur gear hand winch—powder-coat crane	102	46
5PT5G-M1	up to 650 lb capacity with M4022PB-K spur gear hand winch—galvanized crane	102	46
5PT5-M2	up to 650 lb capacity with 4WM2-K worm gear hand winch—powder-coat crane	123	56
5PT5G-M2	up to 650 lb capacity with 4WM2-K worm gear hand winch—galvanized crane	123	56
5PT5S-M3	up to 650 lb capacity with M4042PBSS-K spur gear hand winch—stainless-steel crane	110	50
5PT5-E2	up to 650 lb capacity with 4WP2-K electric winch—powder-coat crane	158	72
Crane Only			
5PT5	up to 650 lb capacity—base model—powder-coat finish	86	39
5PT5G	up to 650 lb capacity—base model—galvanized finish	86	39
5PT5S	up to 650 lb capacity—base model—304 stainless-steel finish	86	39
5PT5S316	up to 650 lb capacity—base model—316 stainless-steel finish	86	39
5PT5X	up to 650 lb capacity—base model—epoxy-gray finish	86	39
Winch Only			
M1	M4022PB-K—spur gear hand winch only—black defender coating	16	7
M2	4WM2-K—worm gear hand winch only—powder coat	37	17
M2X	4WM2EGRA-K—worm gear hand winch only—epoxy gray	37	17
M3	M4042PBSS-K—spur gear hand winch only—stainless steel	24	11
E2	4WP2-K electric winch—115/1/60 VAC with 6 ft pendant control—enamel	72	33
E2X	4WP2EGRA-K electric winch—115/1/60 VAC with 6 ft pendant control—epoxy gray	72	33
E4	4777-K electric winch—115/1/60 VAC with 6 ft pendant control—enamel	96	44
E4X	4777EGRA-K electric winch—115/1/60 VAC with 6 ft pendant control—epoxy gray	96	44
E4DC	4777DC-K electric winch—12 volt DC with 10 ft pendant control—enamel	114	52
E4DCX	4777DCEGRA-K electric winch—12 volt DC with 10 ft pendant control—epoxy gray	114	52

Independent Bases—sold separately

Pedestal, socket (flush-mount), or wall-mount style.

Wheel base for floor crane operation. Base includes stationary front wheels and rear locking caster wheels for 360° maneuverability. See Model 5BR5.

IMPORTANT: Base installation is the customer's responsibility. Thern recommends consulting a civil engineer or other qualified professional. Contact Thern for installation guidelines.



Finish	Pedestal	Flush	Wall	Wheel	Extension
Powder Coat Paint	5BP5	5BF5	5BW5	5BR5	5BE5-15
Galvanized	5BP5G	5BF5G	5BW5G	—	5BE5-15G
304 Stainless Steel	5BP5S	5BF5S	5BW5S	—	5BE5-15S
316 Stainless Steel	5BP5S316	5BF5S316	5BW5S316	—	5BE5-15S316
Epoxy Paint	5BP5X	5BF5X	5BW5X	5BR5X	5BE5-15X
Approximate Ship Weight	21 lbs (9.5 kg)	21 lbs (9.5 kg)	23 lbs (10.4 kg)	77 lbs (35 kg)	17 lbs (7.7 kg)

Wire Rope Assemblies—sold separately

Galvanized or stainless steel wire rope assemblies with swivel hook and latch complete with swaged-ball fitting to work with the quick-disconnect anchor on the winch. See wire rope page for stainless steel and additional wire rope options.

Wire Rope Length	Galvanized Aircraft Cable		304 Stainless Steel Wire Rope	
	3/16" Dia. (4.8 mm)	1/4" Dia. (6.4 mm)	3/16" Dia. (4.8 mm)	1/4" Dia. (6.4 mm)
(ft) (m)	Model No.	Model No.	Model No.	Model No.
20 6.0	WA19-20NS	WA25-20NS	WS19-20NS	WS25-20NS
28 8.5	WA19-28NS	WA25-28NS	WS19-28NS	WS25-28NS
36 10.9	WA19-36NS	WA25-36NS	WS19-36NS	WS25-36NS
45 13.7	WA19-45NS	WA25-45NS	WS19-45NS	WS25-45NS
60 18.2	WA19-60NS	WA25-60NS	WS19-60NS	WS25-60NS
75 22.8	WA19-75NS	WA25-75NS	WS19-75NS	WS25-75NS
90 27.4	WA19-90NS	WA25-90NS	WS19-90NS	WS25-90NS



PERFORMANCE

Commander 500 Lift Below Floor² Level

Lift Below Floor ¹		Wire Rope Diameter		Wire Rope ³ Length		Winch Configurations Maximum Winch Rating											
Minimum (C4) Maximum (C1)						M1		M2		M3		E2		E4			
(ft)	(m)	(ft)	(m)	(in)	(mm)	(ft)	(m)	(lbs)	(kg)	(lbs)	(kg)	(lbs)	(kg)	(lbs)	(kg)	(lbs)	(kg)
2	0.6	7	2.1	3/16"	5	20	6.0	650	294	-	-	650	294	-	-	650	294
10	3.0	15	4.5	3/16"	5	28	8.5	650	294	-	-	650	294	-	-	650	294
18	5.4	23	7.0	3/16"	5	36	10.9	650	294	-	-	650	294	-	-	650	294
27	8.2	32	9.7	3/16"	5	45	13.7	650	294	-	-	650	294	-	-	650	294
42	12.8	47	14.3	3/16"	5	60	18.2	-	-	-	-	650	294	-	-	650	294
57	17.3	62	18.8	3/16"	5	75	22.8	-	-	-	-	650	294	-	-	650	294
72	21.9	77	23.4	3/16"	5	90	27.4	-	-	-	-	640	290	-	-	650	294
102	31.0	107	32.6	3/16"	5	120	36.5	-	-	-	-	-	-	-	-	650	294
2	0.6	7	2.1	1/4"	6	20	6.0	-	-	650	294	650	294	650	294	650	294
10	3.0	15	4.5	1/4"	6	28	8.5	-	-	650	294	650	294	650	294	650	294
18	5.4	23	7.0	1/4"	6	36	10.9	-	-	650	294	650	294	650	294	650	294
27	8.2	32	9.7	1/4"	6	45	13.7	-	-	650	294	650	294	650	294	650	294
42	12.8	47	14.3	1/4"	6	60	18.2	-	-	650	294	600	272	650	294	650	294
57	17.3	62	18.8	1/4"	6	75	22.8	-	-	650	294	-	-	650	294	650	294
72	21.9	77	23.4	1/4"	6	90	27.4	-	-	-	-	-	-	-	-	650	294
102	31.0	107	32.6	1/4"	6	120	36.5	-	-	-	-	-	-	-	-	-	-

¹Lift below floor level varies depending on boom position and base configuration. For longer lifts, please contact factory.

²Performance characteristics are for standard products referred to in this manual. Non-standard products may vary from the original design. Contact Tern, Inc. for this information.

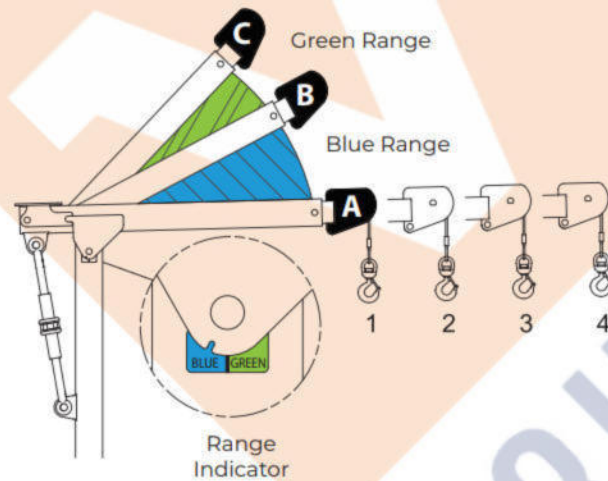
³Wire rope assemblies include a hook and a swaged-ball fitting to work with quick-disconnect anchor on winches, and 316SS wire rope is also available. Please contact the factory.

Winch Configurations



Commander 500 Performance Ratings²

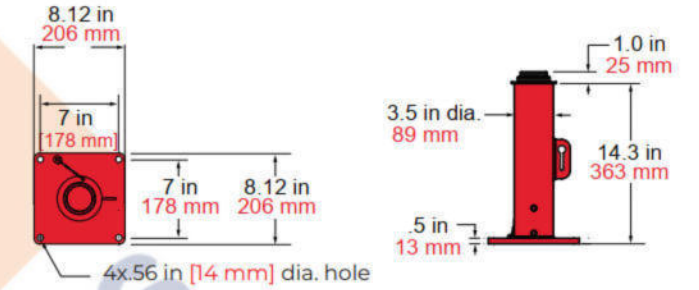
Boom Position	Load Rating	
	(lb)	(kg)
A-1	550	250
A-2	425	190
A-3	350	160
A-4	300	135
B-1	650	300
B-2	525	235
B-3	425	190
B-4	350	160
C-1	650	300
C-2	525	235
C-3	425	190
C-4	350	160



Commander 500 with Pedestal Base Reach & Height Above Floor

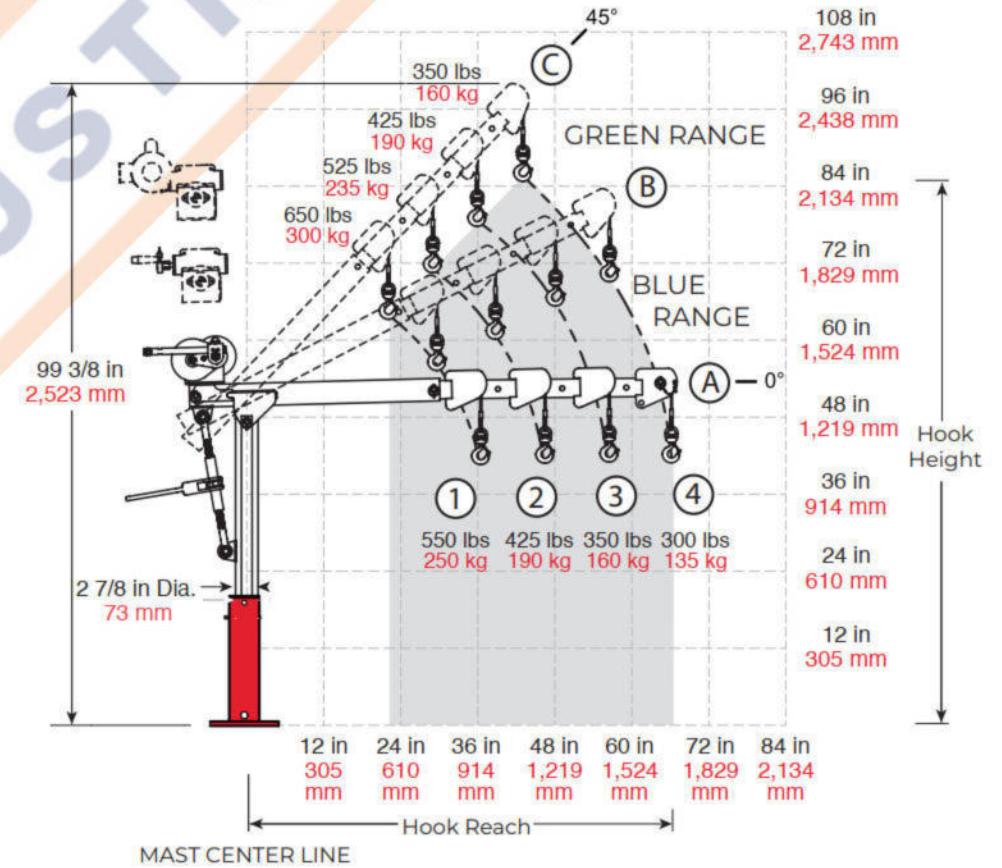
Boom Position	Hook Reach		Hook Height	
	(in)	(mm)	(in)	(mm)
A-1	36	914	42	1,066
A-2	46	1,168	42	1,066
A-3	56	1,422	42	1,066
A-4	66	1,676	42	1,066
B-1	29	736	56	1,422
B-2	38	965	60	1,524
B-3	47	1,193	65	1,651
B-4	56	1,422	69	1,752
C-1	23	584	64	1,625
C-2	30	762	71	1,803
C-3	37	940	78	1,981
C-4	44	1,117	85	2,159

Dimensions are for reference only and subject to change without notice.



Commander 500 Pedestal Base

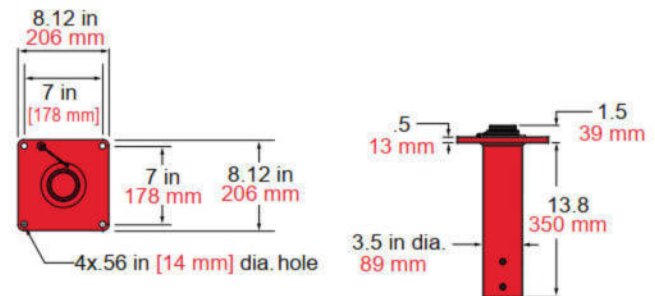
5BP5 5BP5G 5BP5S 5BP5S316 5BP5X



Commander 500 with Flush- or Wall-Mount Base Reach & Height Above Floor

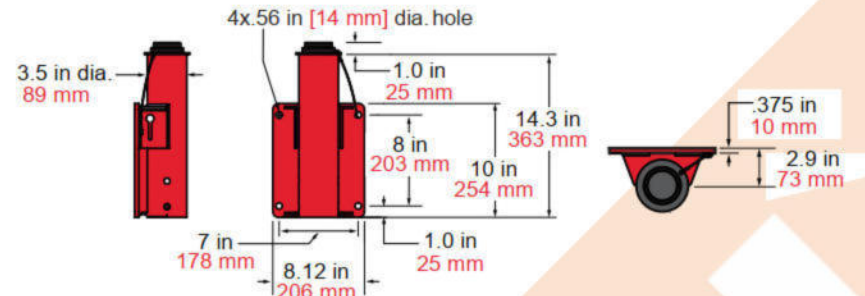
Boom Position	Hook Reach		Hook Height	
	(in)	(mm)	(in)	(mm)
A-1	36	914	28	711
A-2	46	1,168	28	711
A-3	56	1,422	28	711
A-4	66	1,676	28	711
B-1	30	762	42	1,066
B-2	38	965	46	1,168
B-3	46	1,168	51	1,295
B-4	54	1,371	55	1,397
C-1	23	584	50	1,270
C-2	29	736	57	1,447
C-3	36	914	63	1,600
C-4	42	1,066	70	1,778

Dimensions are for reference only and subject to change without notice.



Commander 500 Flush-Mount Base

- SBF5 5BF5S 5BF5X
- SBF5G 5BF5S316



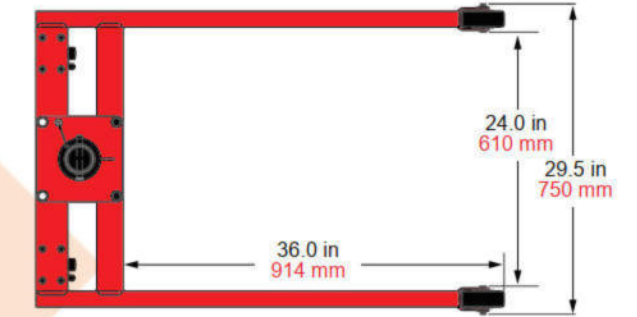
Commander 500 Wall-Mount Base

- 5BW5 5BW5S 5BW5X
- 5BW5G 5BW5S316

Commander 500 with Wheel Base Reach & Height Above Floor

Boom Position	Hook Reach		Hook Height	
	(in)	(mm)	(in)	(mm)
A-1	36	914	46	1,168
A-2	46	1,168	46	1,168
B-1	30	762	60	1,524
B-2	38	965	64	1,625
C-1	23	584	68	1,727
C-2	29	736	75	1,905

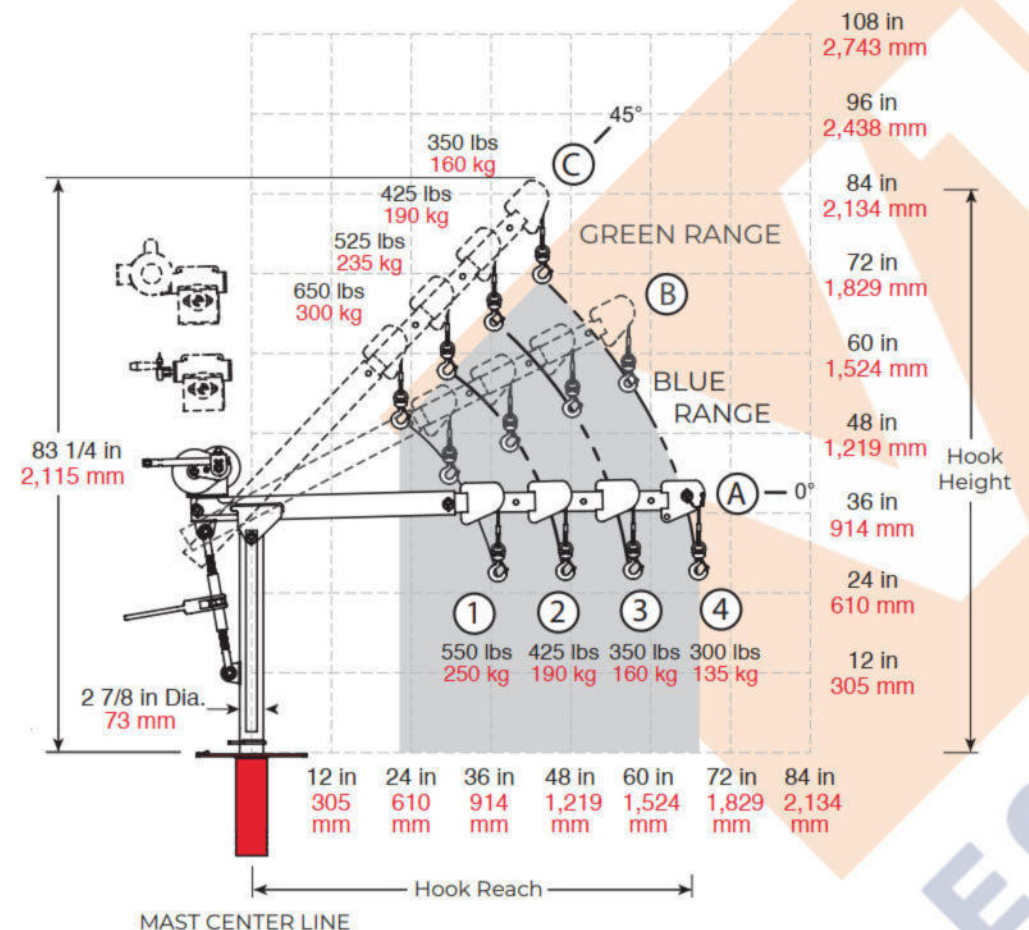
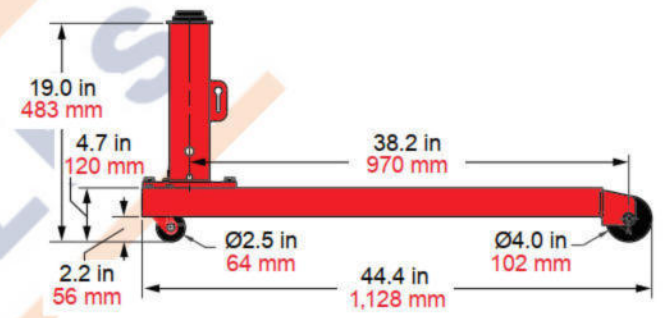
Dimensions are for reference only and subject to change without notice.



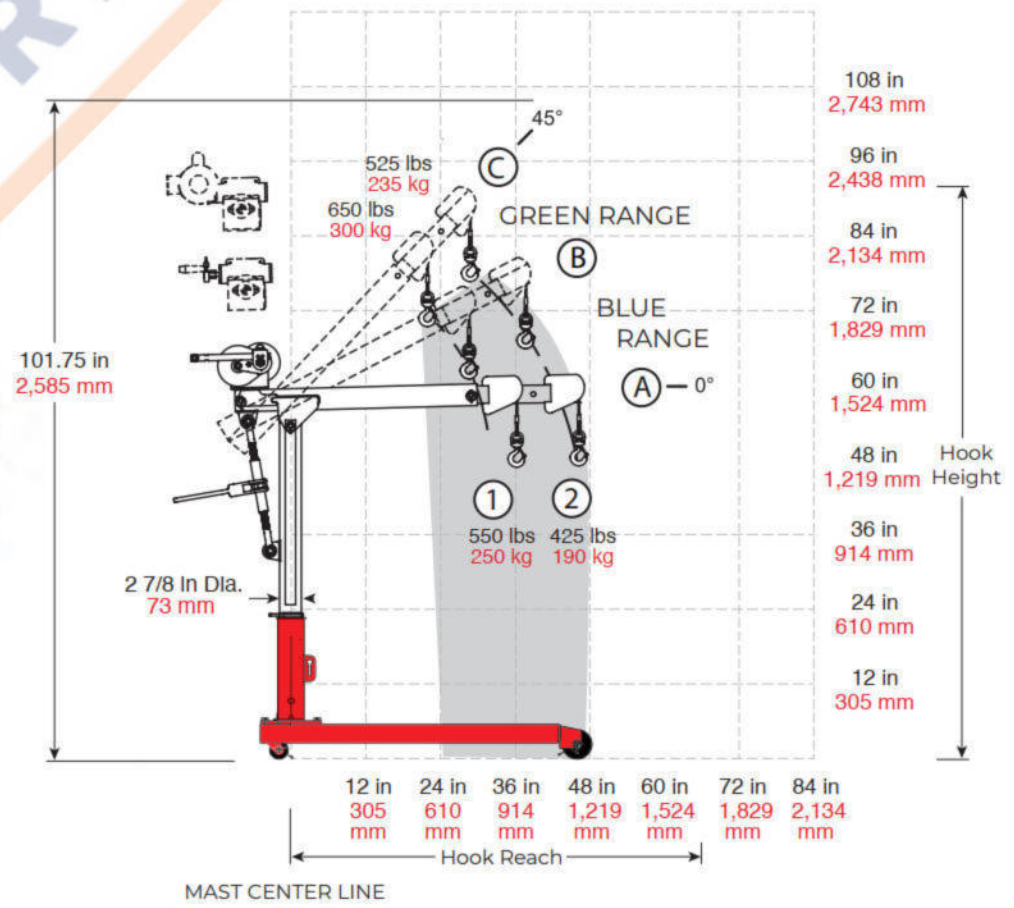
Commander 500 Wheel Base Load Ratings

Boom Position	Load Rating (lb)	Load Rating (kg)
1	SEE LOAD RATING ON CRANE	
2	SEE LOAD RATING ON CRANE	
3	SEE LOAD RATING ON CRANE	
4	DO NOT USE	

Dimensions are for reference only and subject to change without notice.



IMPORTANT: Crane DOES NOT rotate when assembled in 5BR wheel base.



TECHNICAL DRAWINGS & SPECIFICATIONS

COMMANDER® 1000

PORTABLE DAVIT CRANE

CONFIGURATIONS

Model	Description	Approx. Ship Wt.	
		(lb)	(kg)
Popular Configurations			
5PT10-M1	up to 1,200 lb capacity with M4312PB-K spur gear hand winch—powder-coat crane	150	68
5PT10G-M1	up to 1,200 lb capacity with M4312PB-K spur gear hand winch—galvanized crane	150	68
5PT10-M2	up to 1,200 lb capacity with 4WM2-K worm gear hand winch—powder-coat crane	164	74
5PT10G-M2	up to 1,200 lb capacity with 4WM2-K worm gear hand winch—galvanized crane	164	74
5PT10S-M3	up to 1,200 lb capacity with M4312PBSS-K spur gear hand winch—stainless-steel crane	150	68
5PT10-E2	up to 1,200 lb capacity with 4WP2-K electric winch—powder-coat crane	207	94
Crane Only			
5PT10	up to 1,200 lb capacity—base model—powder-coat finish	122	55
5PT10G	up to 1,200 lb capacity—base model—galvanized finish	122	55
5PT10S	up to 1,200 lb capacity—base model—304 stainless-steel finish	122	55
5PT10S316	up to 1,200 lb capacity—base model—316 stainless-steel finish	122	55
5PT10X	up to 1,200 lb capacity—base model—epoxy-gray finish	122	55
Winch Only			
M1	M4312PB-K—spur gear hand winch only—zinc plated	28	13
M2	4WM2-K—worm gear hand winch only—powder coat	42	19
M2X	4WM2EGRA-K—worm gear hand winch only—epoxy gray	42	19
M3	M4312PBSS-K—spur gear hand winch only—stainless steel	28	13
E2	4WP2-K electric winch—115/1/60 VAC with 6 ft pendant control—enamel	85	39
E2X	4WP2EGRA-K electric winch—115/1/60 VAC with 6 ft pendant control—epoxy gray	85	39
E4	4777-K electric winch—115/1/60 VAC with 6 ft pendant control—enamel	110	50
E4X	4777EGRA-K electric winch—115/1/60 VAC with 6 ft pendant control—epoxy gray	110	50
E4DC	4777DC-K electric winch—12 volt DC with 10 ft pendant control—enamel	105	48
E4DCX	4777DC-K electric winch—12 volt DC with 10 ft pendant control—epoxy gray	105	48

Independent Bases—sold separately

Pedestal, socket, or wall-mount style.

Wheel base for floor crane operation. Base legs adjust in length and width. See Model 5BR10.

IMPORTANT: Base installation is the customer's responsibility. Thern recommends consulting a civil engineer or other qualified professional. Contact Thern for installation guidelines.



Finish	Pedestal	Flush	Wall	Wheel	Extension
Powder Coat Paint	5BP10	5BF10	5BW10	5BR10	5BE10-15
Galvanized	5BP10G	5BF10G	5BW10G	—	5BE10-15G
304 Stainless Steel	5BP10S	5BF10S	5BW10S	—	5BE10-15S
316 Stainless Steel	5BP10S316	5BF10S316	5BW10S316	—	5BE10-15S316
Epoxy Paint	5BP10X	5BF10X	5BW10X	5BR10X	5BE10-15X
Approximate Ship Weight	52 lbs (24 kg)	44 lbs (20 kg)	48 lbs (22 kg)	285 lbs (130 kg)	—

Wire Rope Assemblies—sold separately

Galvanized or stainless steel wire rope assemblies with swaged-ball fitting to work with the quick-disconnect anchor on the winch. 316 stainless also available. Please contact Thern.

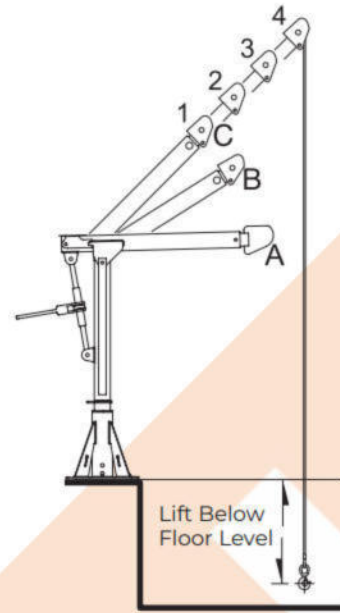
Wire Rope Length	Galvanized Aircraft Cable		304 Stainless Steel Wire Rope	
	3/16" Dia. (4.8 mm)	1/4" Dia. (6.4 mm)	3/16" Dia. (4.8 mm)	1/4" Dia. (6.4 mm)
(ft) (m)	Model No.	Model No.	Model No.	Model No.
20 6.0	WA19-20NS	WA25-20NS	WS19-20NS	WS25-20NS
28 8.5	WA19-28NS	WA25-28NS	WS19-28NS	WS25-28NS
36 10.9	WA19-36NS	WA25-36NS	WS19-36NS	WS25-36NS
45 13.7	WA19-45NS	WA25-45NS	WS19-45NS	WS25-45NS
60 18.2	WA19-60NS	WA25-60NS	WS19-60NS	WS25-60NS
75 22.8	WA19-75NS	WA25-75NS	WA19-75NS	WS25-75NS
90 27.4	WA19-90NS	—	WA19-90NS	—



PERFORMANCE

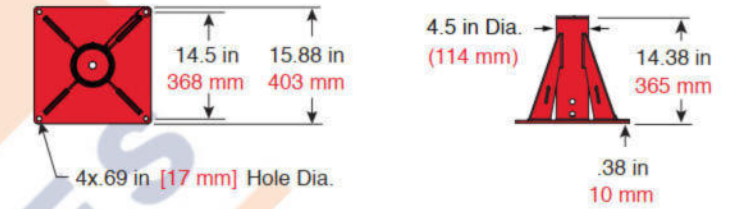
Commander 1000 Lift Below Floor² Level

Lift Below Floor ¹		Wire Rope Diameter		Wire Rope Length ³		Winch Configurations Maximum Winch Rating											
Minimum (C4) Maximum (C1)						M1		M2		M3		E2		E4			
(ft)	(m)	(ft)	(m)	(in)	(mm)	(ft)	(m)	(lbs)	(kg)	(lbs)	(kg)	(lbs)	(kg)	(lbs)	(kg)		
2	0.6	7	2.1	3/16"	5	20	6.0	1,200	544	-	-	1,200	544	-	-	1,200	544
10	3.0	15	4.5	3/16"	5	28	8.5	1,200	544	-	-	1,200	544	-	-	1,200	544
18	5.4	23	7.0	3/16"	5	36	10.9	1,200	544	-	-	1,200	544	-	-	1,200	544
27	8.2	32	9.7	3/16"	5	45	13.7	1,200	544	-	-	1,200	544	-	-	1,200	544
42	12.8	47	14.3	3/16"	5	60	18.2	1,200	544	-	-	1,200	544	-	-	1,200	544
57	17.3	62	18.8	3/16"	5	75	22.8	1,200	544	-	-	1,200	544	-	-	1,200	544
72	21.9	77	23.4	3/16"	5	90	27.4	1,200	544	-	-	1,200	544	-	-	1,200	544
102	31.0	107	32.6	3/16"	5	120	36.5	-	-	-	-	-	-	-	-	1,200	544
2	0.6	7	2.1	1/4"	6	20	6.0	1,200	544	1,200	544	1,200	544	1,200	544	1,200	544
10	3.0	15	4.5	1/4"	6	28	8.5	1,200	544	1,200	544	1,200	544	1,200	544	1,200	544
18	5.4	23	7.0	1/4"	6	36	10.9	1,200	544	1,200	544	1,200	544	1,200	544	1,200	544
27	8.2	32	9.7	1/4"	6	45	13.7	1,200	544	1,200	544	1,200	544	1,200	544	1,200	544
42	12.8	47	14.3	1/4"	6	60	18.2	1,200	544	1,200	544	1,200	544	1,200	544	1,200	544
57	17.3	62	18.8	1/4"	6	75	22.8	-	-	1,200	544	-	-	1,200	544	1,200	544
72	21.9	77	23.4	1/4"	6	90	27.4	-	-	-	-	-	-	-	-	1,200	544
102	31.0	107	32.6	1/4"	6	120	36.5	-	-	-	-	-	-	-	-	-	-
2	0.6	7	2.1	5/16"	8	20	6.0	1,200	544	1,200	544	1,200	544	1,200	544	1,200	544
10	3.0	15	4.5	5/16"	8	28	8.5	1,200	544	1,200	544	1,200	544	1,200	544	1,200	544
18	5.4	23	7.0	5/16"	8	36	10.9	1,200	544	1,200	544	1,200	544	1,200	544	1,200	544
27	8.2	32	9.7	5/16"	8	45	13.7	1,200	544	1,200	544	1,200	544	1,200	544	1,200	544
42	12.8	47	14.3	5/16"	8	60	18.2	-	-	-	-	-	-	-	-	1,200	544
57	17.3	62	18.8	5/16"	8	75	22.8	-	-	-	-	-	-	-	-	-	-
72	21.9	77	23.4	5/16"	8	90	27.4	-	-	-	-	-	-	-	-	-	-
102	31.0	107	32.6	5/16"	8	120	36.5	-	-	-	-	-	-	-	-	-	-



Commander 1000 with Pedestal Base Reach & Height Above Floor¹

Boom Position	Hook Reach		Hook Height	
	(in)	(mm)	(in)	(mm)
A-1	36	914	42	1,066
A-2	46	1,168	42	1,066
A-3	56	1,422	42	1,066
A-4	66	1,676	42	1,066
B-1	29	736	56	1,422
B-2	38	965	60	1,524
B-3	47	1,193	65	1,651
B-4	56	1,422	69	1,752
C-1	22	558	64	1,625
C-2	29	736	71	1,803
C-3	36	914	78	1,981
C-4	43	1,092	85	2,159



Commander 1000 Pedestal Base

5BP10 5BP10G 5BP10S 5BP10S316 5BP10X

¹Performance Characteristics are for standard products. Non-standard products may vary from the original design. Contact Thern, Inc. for this information.

Dimensions are for reference only and subject to change without notice.

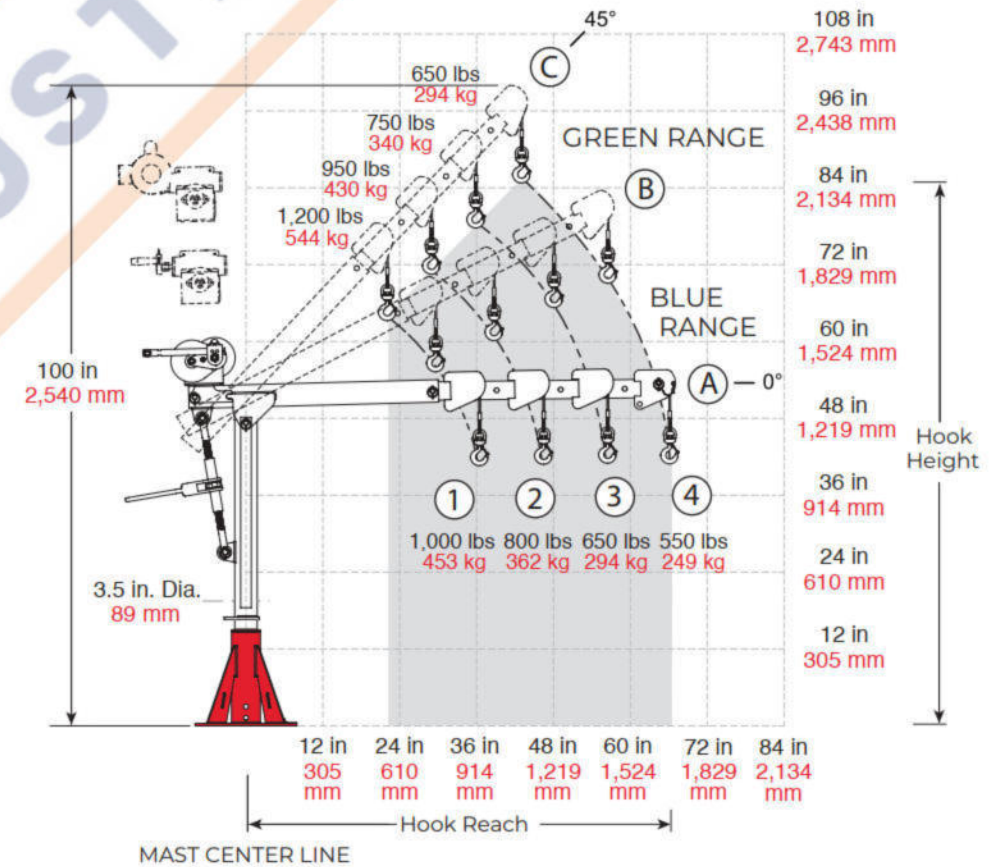
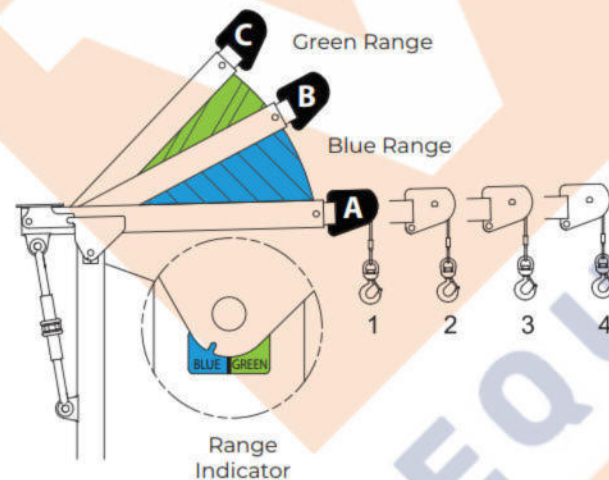
¹Lift below floor level varies depending on boom position and base configuration. For longer lifts, please contact factory.
²Performance characteristics are for standard products referred to in this manual. Non-standard products may vary from the original design. Contact Thern, Inc. for this information.
³Wire rope assemblies include a hook and a swaged-ball fitting to work with quick-disconnect anchor on winches, and 316SS wire rope is also available. Please contact the factory.

Winch Configurations



Commander 1000 Performance Ratings²

Boom Position	Load Rating	
	(lb)	(kg)
A-1	1,000	453
A-2	800	362
A-3	650	294
A-4	550	249
B-1	1,200	544
B-2	950	430
B-3	750	340
B-4	650	294
C-1	1,200	544
C-2	950	430
C-3	750	340
C-4	650	294

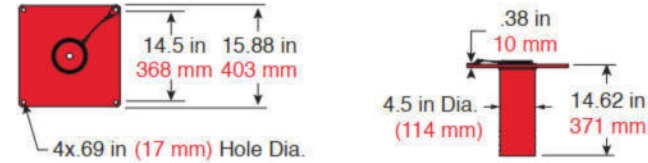


Commander 1000 with Flush- or Wall-Mount Base Reach & Height Above Floor¹

Boom Position	Hook Reach		Hook Height	
	(in)	(mm)	(in)	(mm)
A-1	36	914	28	711
A-2	46	1,168	28	711
A-3	56	1,422	28	711
A-4	66	1,676	28	711
B-1	29	736	42	1,066
B-2	38	965	46	1,168
B-3	47	1,193	51	1,295
B-4	56	1,422	55	1,397
C-1	22	558	50	1,270
C-2	29	736	57	1,447
C-3	36	914	64	1,625
C-4	43	1,092	71	1,803

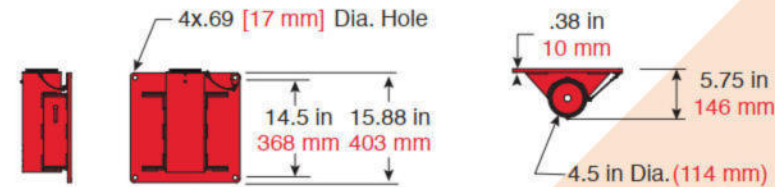
¹Performance Characteristics are for standard products. Non-standard products may vary from the original design. Contact Tern, Inc. for this information.

Dimensions are for reference only and subject to change without notice.



Commander 1000 Flush-Mount Base

SBF10 SBF10G SBF10S
SBF10S316 SBF10X



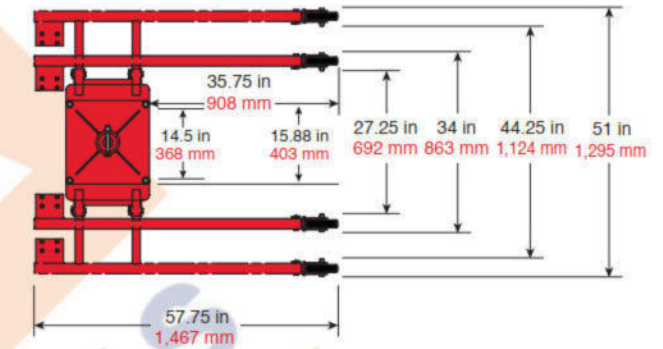
Commander 1000 Wall-Mount Base

5BW10 5BW10G 5BW10S
5BW10S316 5BW10X

Commander 1000 on Wheel Base Reach & Height Above Floor

Boom Position	Hook Reach		Hook Height	
	(in)	(mm)	(in)	(mm)
A-1	36	914	48	1,219
A-2	46	1,168	48	1,219
A-3	56	1,422	48	1,219
A-4	66	1,676	48	1,219
B-1	29	736	62	1,574
B-2	38	965	66	1,676
B-3	47	1,193	71	1,803
B-4	56	1,422	75	1,905
C-1	22	558	70	1,778
C-2	29	736	77	1,955
C-3	36	914	84	2,133
C-4	43	1,092	91	2,311

Dimensions are for reference only and subject to change without notice.



Commander 1000 Wheel Base

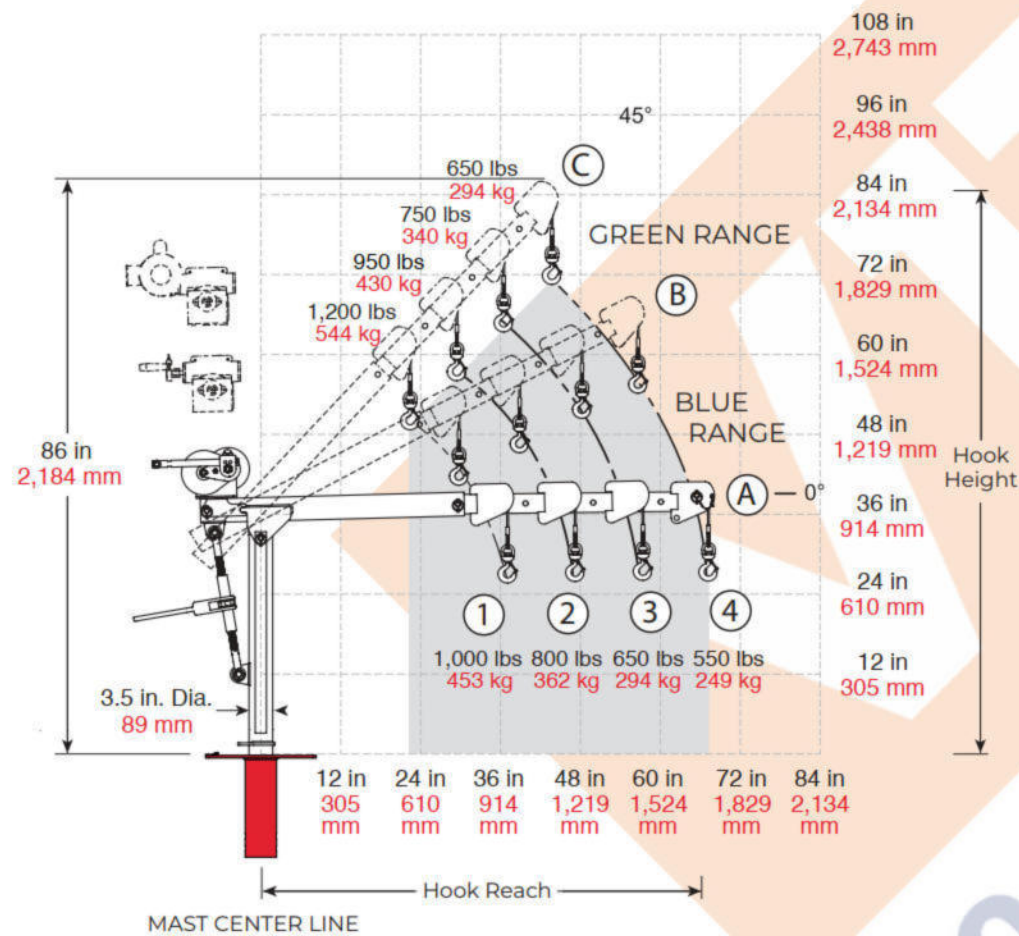
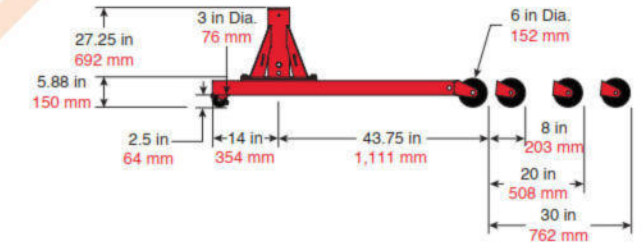
5BR10 5BR10X

Commander 1000 Wheel Base Load Ratings

Boom Position	Leg Pos. 1		Leg Pos. 2		Leg Pos. 3		Leg Pos. 4	
	(lb)	(kg)	(lb)	(kg)	(lb)	(kg)	(lb)	(kg)
A/B-1								
A/B-2								
A/B-3	DO NOT USE							
A/B-4	DO NOT USE							

SEE LOAD RATINGS ON CRANE

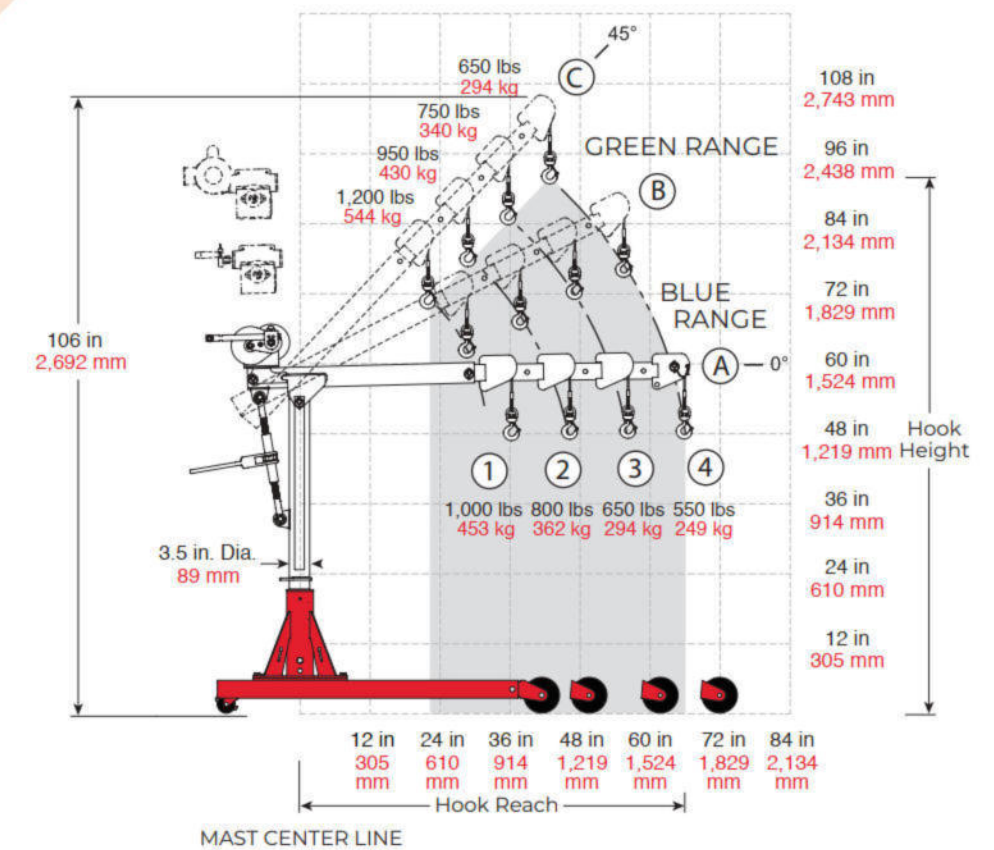
Dimensions are for reference only and subject to change without notice.



Commander 1000 on Wheel Base



IMPORTANT:
Crane DOES NOT rotate when assembled in 5BR10 wheel base.



TECHNICAL DRAWINGS & SPECIFICATIONS

COMMANDER® 2000

PORTABLE DAVIT CRANE

CONFIGURATIONS

Model	Description	Approx. Ship Wt.	
		(lb)	(kg)
Popular Configurations			
5PT20-M1	up to 2,000 lb capacity with M4312PB-K spur gear hand winch—powder-coat crane	241	109
5PT20G-M1	up to 2,000 lb capacity with M4312PB-K spur gear hand winch—galvanized crane	241	109
5PT20-M2	up to 2,000 lb capacity with 4WM2-K worm gear hand winch—powder-coat crane	255	116
5PT20G-M2	up to 2,000 lb capacity with 4WM2-K worm gear hand winch—galvanized crane	255	116
5PT20S-M3	up to 2,000 lb capacity with M4312PBSS-K spur gear hand winch—stainless-steel crane	241	109
5PT20-E2	up to 2,000 lb capacity with 4WP2-K electric winch—powder-coat crane	298	135
Crane Only			
5PT20	up to 2,000 lb capacity—base model—powder-coat finish	213	97
5PT20G	up to 2,000 lb capacity—base model—galvanized finish	213	97
5PT20S	up to 2,000 lb capacity—base model—304 stainless-steel finish	213	97
5PT20S316	up to 2,000 lb capacity—base model—316 stainless-steel finish	213	97
5PT20X	up to 2,000 lb capacity—base model—gray-epoxy finish	213	97
Winch Only			
M1	M4312PB-K—spur gear hand winch only—zinc plated	28	13
M2	4WM2-K—worm gear hand winch only—powder coat	42	19
M2X	4WM2EGRA-K—worm gear hand winch only—gray epoxy	42	19
M3	M4312PBSS-K—spur gear hand winch only—stainless steel	28	13
E2	4WP2-K electric winch—115/1/60 VAC with 6 ft pendant control—enamel	85	39
E2X	4WP2EGRA-K electric winch—115/1/60 VAC with 6 ft pendant control—gray epoxy	85	39
E3X	3WG4B-KX electric winch—115/1/60 VAC with 6 ft pendant control—gray-epoxy	85	39
E4	4777-K electric winch—115/1/60 VAC with 6 ft pendant control—enamel	110	50
E4X	4777EGRA-K electric winch—115/1/60 VAC with 6 ft pendant control—gray epoxy	110	50
E4DC	4777DC-K electric winch—12 volt DC with 10 ft pendant control—enamel	105	48
E4DCX	4777DC-K electric winch—12 volt DC with 10 ft pendant control—gray epoxy	105	48

Independent Bases—sold separately

Pedestal, socket, or wall-mount style.

Wheel base for floor crane operation. Base legs adjust in length and width.

IMPORTANT: Base installation is the customer's responsibility. Thern recommends consulting a civil engineer or other qualified professional. Contact Thern for installation guidelines.



Finish	Pedestal	Flush	Wall	Wheel	Extension
Powder Coat Paint	5BP20	5BF20	5BW20	5BR20	5BE20-15
Galvanized	5BP20G	5BF20G	5BW20G	—	5BE20-15G
304 Stainless Steel	5BP20S	5BF20S	5BW20S	—	5BE20-15S
316 Stainless Steel	5BP20S316	5BF20S316	5BW20S316	—	5BE20-15S316
Epoxy Paint	5BP20X	5BF20X	5BW20X	5BR20X	5BE20-15X
Approximate Ship Weight	66 lbs (30 kg)	57 lbs (26 kg)	64 lbs (30 kg)	375 lbs (171 kg)	53 lbs (25 kg)

Wire Rope Assemblies—sold separately

Galvanized or stainless steel wire rope assemblies with swaged-ball fitting to work with the quick-disconnect anchor on the winch. 316 stainless also available. Please contact Thern.

Wire Rope Length		Galvanized Aircraft Cable		304 Stainless Steel Wire Rope	
		1/4" Dia. (6.4 mm)	5/16" Dia. (7.9 mm)	1/4" Dia. (6.4 mm)	5/16" Dia. (7.9 mm)
(ft)	(m)	Model No.	Model No.	Model No.	Model No.
20	6.0	WA25-20NS	WA31-20DS	WS25-20NS	WS31-20DS
28	8.5	WA25-28NS	WA31-28DS	WS25-28NS	WS31-28DS
36	10.9	WA25-36NS	WA31-36DS	WS25-36NS	WS31-36DS
45	13.7	WA25-45NS	WA31-45DS	WS25-45NS	WS31-45DS
60	18.2	WA25-60NS	WA31-60DS	WS25-60NS	WS31-60DS
75	22.8	WA25-75NS	—	WS25-75NS	—



PERFORMANCE

Commander 2000 Lift Below Floor² Level

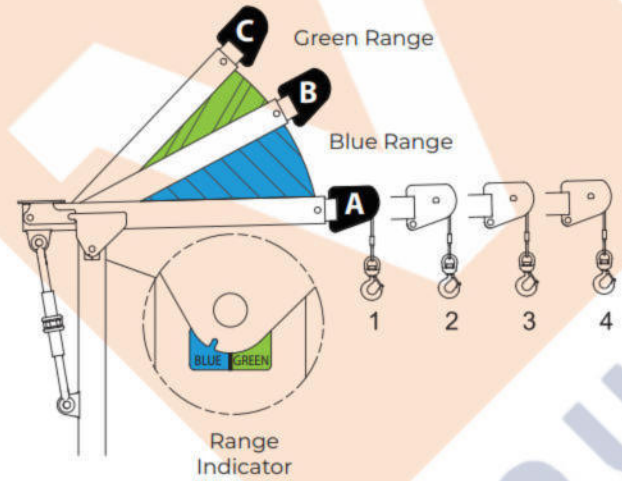
Lift Below Floor ¹		Wire Rope Diameter		Wire Rope Length ³		Winch Configurations Maximum Winch Rating									
Minimum (C4) Maximum (C1)						M1		M2		M3		E2		E4	
(ft)	(m)	(ft)	(m)	(in)	(mm)	(ft)	(m)	(lbs)	(kg)	(lbs)	(kg)	(lbs)	(kg)	(lbs)	(kg)
0	0.0	5	1.5	1/4"	6	20	6.0	2,000	907	2,000	907	2,000	907	2,000	907
8	2.4	13	3.9	1/4"	6	28	8.5	1,800	816	1,700	771	1,800	816	1,700	771
16	4.8	21	6.4	1/4"	6	36	10.9	1,800	816	1,700	771	1,800	816	1,700	771
25	7.6	30	9.1	1/4"	6	45	13.7	1,600	725	1,500	680	1,600	725	1,500	680
40	12.1	45	13.7	1/4"	6	60	18.2	1,400	635	1,300	589	1,400	635	1,300	589
55	16.7	60	18.2	1/4"	6	75	22.8	-	-	1,300	589	-	-	1,300	589
70	21.3	75	22.8	1/4"	6	90	27.4	-	-	-	-	-	-	1,300	589
100	30.4	105	32.0	1/4"	6	120	36.5	-	-	-	-	-	-	-	-
0	0.0	5	1.5	5/16"	8	20	6.0	1,900	861	1,900	861	1,900	861	1,900	861
8	2.4	13	3.9	5/16"	8	28	8.5	1,600	725	1,600	725	1,600	725	1,600	725
16	4.8	21	6.4	5/16"	8	36	10.9	1,400	635	1,400	635	1,400	635	1,400	635
25	7.6	30	9.1	5/16"	8	45	13.7	1,300	589	1,400	635	1,300	589	1,400	635
40	12.1	45	13.7	5/16"	8	60	18.2	-	-	-	-	-	-	1,300	589
55	16.7	60	18.2	5/16"	8	75	22.8	-	-	-	-	-	-	-	-
70	21.3	75	22.8	5/16"	8	90	27.4	-	-	-	-	-	-	-	-
100	30.4	105	32.0	5/16"	8	120	36.5	-	-	-	-	-	-	-	-

¹Lift below floor level varies depending on boom position and base configuration. For longer lifts, please contact factory.
²Performance characteristics are for standard products referred to in this manual. Non-standard products may vary from the original design. Contact Thern, Inc. for this information.
³Wire rope assemblies include a hook and a swaged-ball fitting to work with quick-disconnect anchor on winches, and 316SS wire rope is also available. Please contact the factory.



Commander 2000 Performance Ratings²

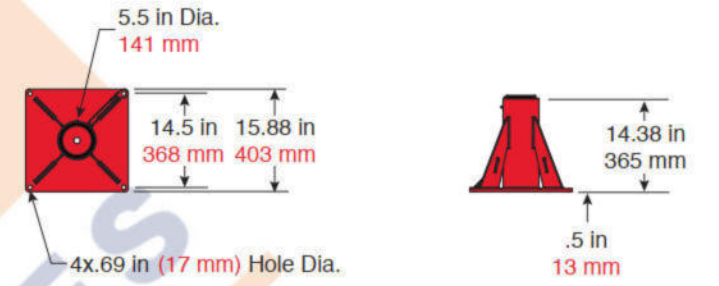
Boom Position	Load Rating	
	(lb)	(kg)
A-1	2,000	907
A-2	1,600	725
A-3	1,300	589
A-4	1,100	498
B-1	2,000	907
B-2	1,900	861
B-3	1,500	680
B-4	1,300	589
C-1	2,000	907
C-2	1,900	861
C-3	1,500	680
C-4	1,300	589



Commander 2000 with Pedestal Base Reach & Height Above Floor¹

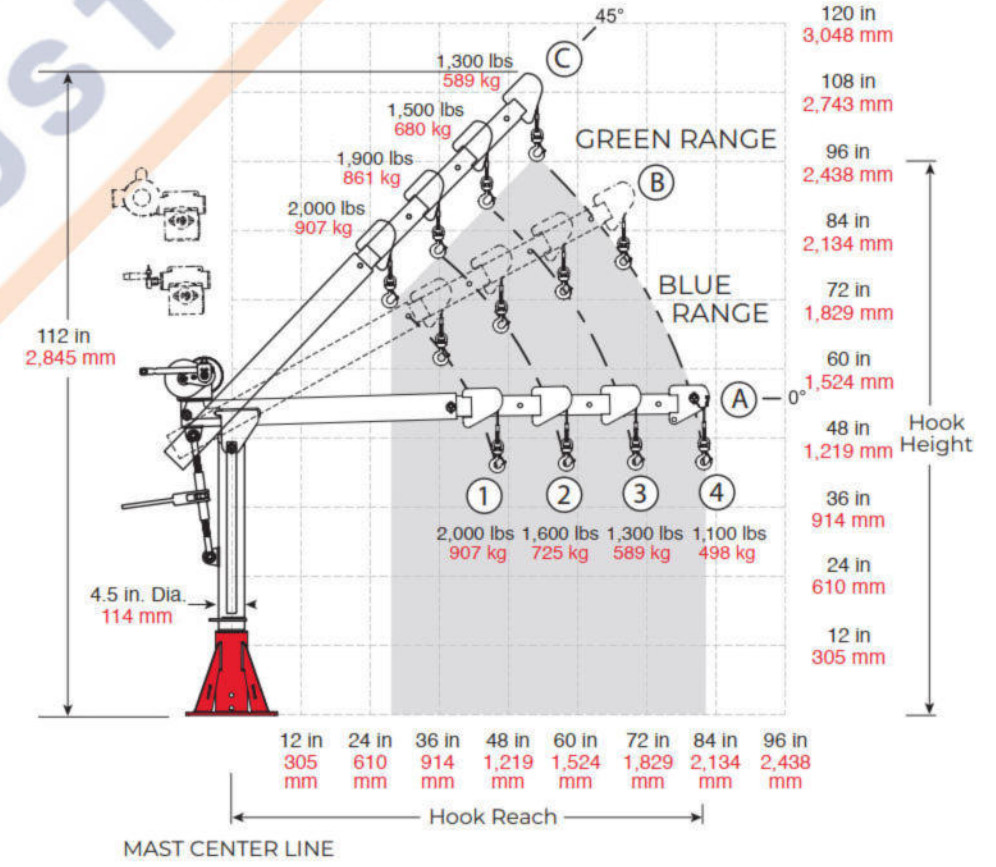
Boom Position	Hook Reach		Hook Height	
	(in)	(mm)	(in)	(mm)
A-1	46	1,168	43	1,092
A-2	58	1,473	43	1,092
A-3	70	1,778	43	1,092
A-4	82	2,082	43	1,092
B-1	37	939	61	1,549
B-2	48	1,219	67	1,701
B-3	58	1,473	72	1,828
B-4	69	1,752	78	1,981
C-1	28	711	71	1,803
C-2	36	914	80	2,032
C-3	45	1,143	88	2,235
C-4	53	1,346	97	2,463

¹Performance characteristics are for standard products. Non-standard products may vary from the original design. Contact Thern, Inc. for this information.
 Dimensions are for reference only and subject to change without notice.



Commander 2000 Pedestal Base

- 5BP20 5BP20G
- 5BP20S 5BP20S316
- 5BP20X

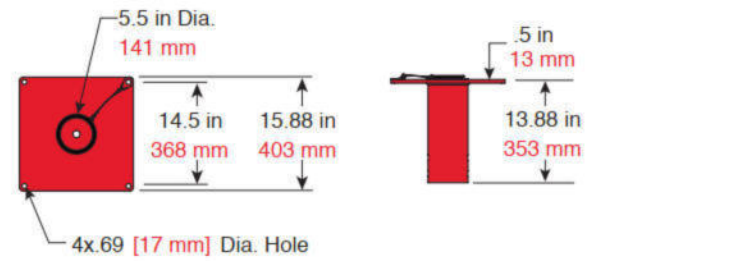


Commander 2000 with Flush- or Wall-Mount Base Reach & Height Above Floor¹

Boom Position	Hook Reach		Hook Height	
	(in)	(mm)	(in)	(mm)
A-1	46	1,168	29	736
A-2	58	1,473	29	736
A-3	70	1,778	29	736
A-4	82	2,082	29	736
B-1	37	939	47	1,193
B-2	48	1,219	53	1,346
B-3	58	1,473	58	1,473
B-4	69	1,752	64	1,625
C-1	28	711	57	1,447
C-2	36	914	66	1,676
C-3	45	1,143	74	1,879
C-4	53	1,346	83	2,108

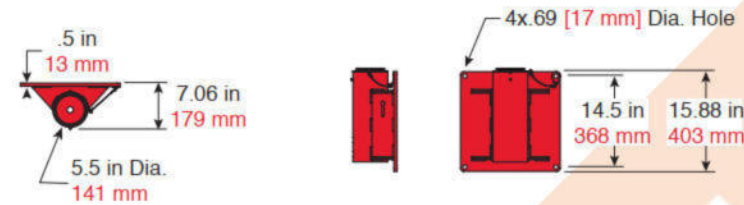
¹Performance characteristics are for standard products. Non-standard products may vary from the original design. Contact Thern, Inc. for this information.

Dimensions are for reference only and subject to change without notice.



Commander 2000 Flush-Mount Base

5BF20 5BF20G 5BF20S
5BF20S316 5BF20X



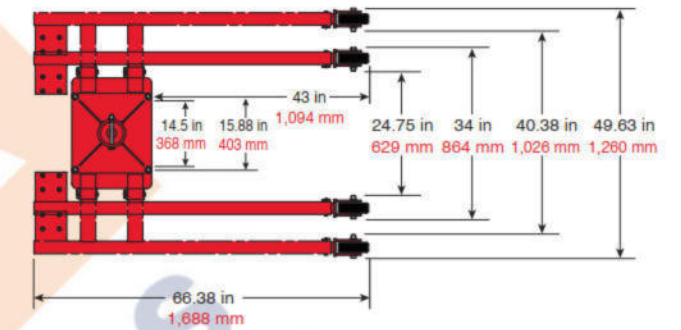
Commander 2000 Wall-Mount Base

5BW20 5BW20G 5BW20S
5BW20S316 5BW20X

Commander 2000 on Wheel Base Reach & Height Above Floor

Boom Position	Hook Reach		Hook Height	
	(in)	(mm)	(in)	(mm)
A-1	46	1,168	50	1,270
A-2	58	1,473	50	1,270
A-3	70	1,778	50	1,270
A-4	82	2,082	50	1,270
B-1	37	939	68	1,727
B-2	48	1,219	74	1,879
B-3	58	1,473	79	2,006
B-4	69	1,752	85	2,159
C-1	28	711	78	1,981
C-2	36	914	87	2,209
C-3	45	1,143	95	2,413
C-4	53	1,346	104	2,641

Dimensions are for reference only and subject to change without notice.



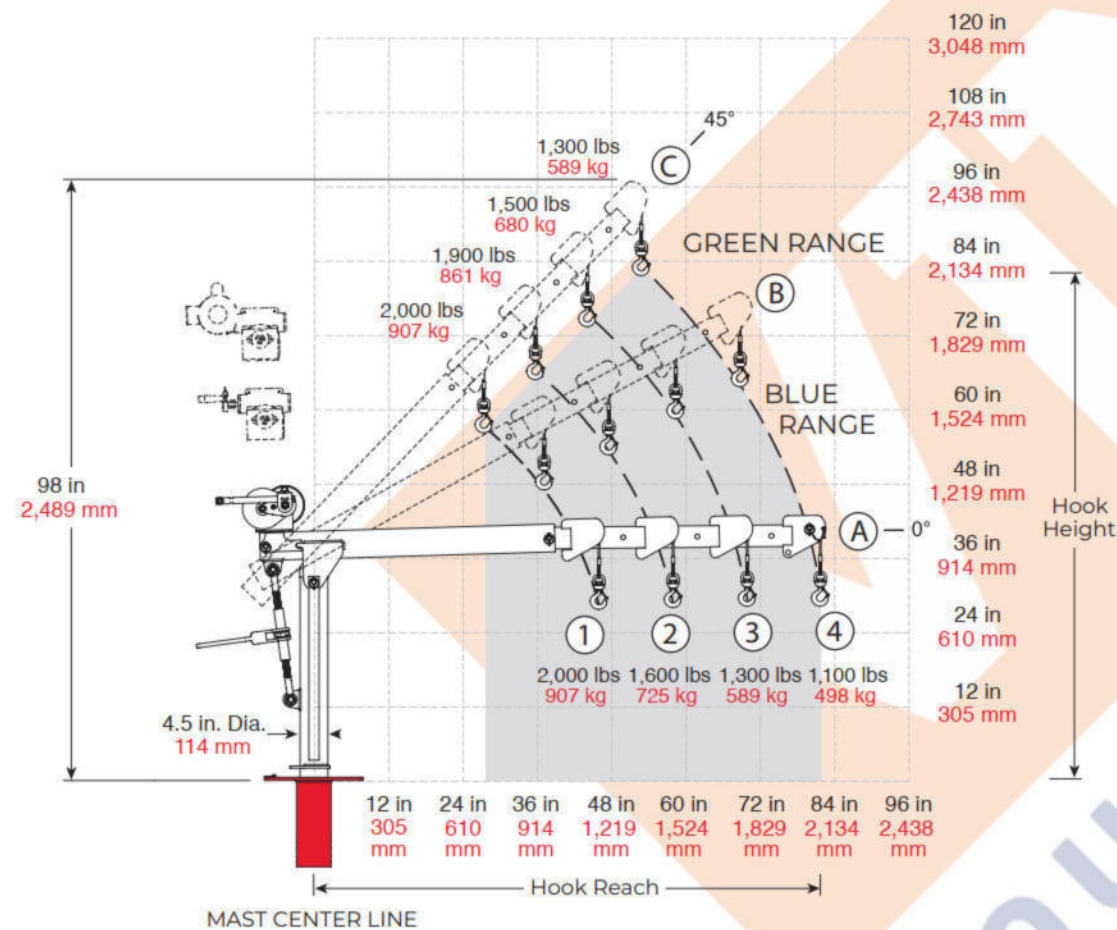
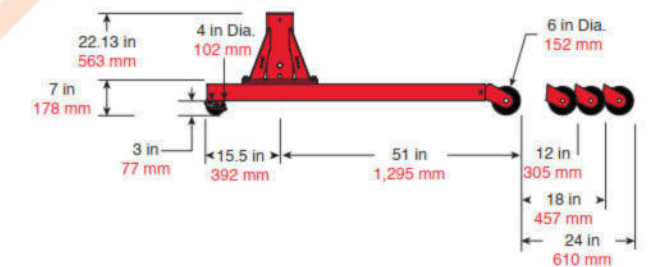
Commander 2000 Wheel Base

5BR20 5BR20X

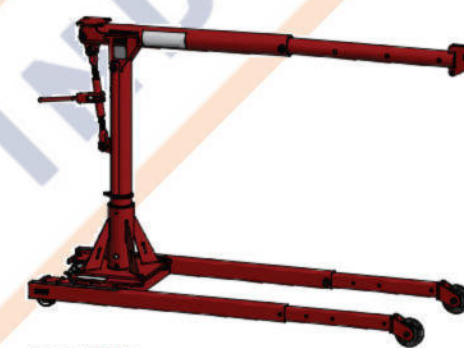
Commander 2000 Wheel Base Load Ratings

Boom Position	Leg Pos. 1		Leg Pos. 2		Leg Pos. 3		Leg Pos. 4	
	(lb)	(kg)	(lb)	(kg)	(lb)	(kg)	(lb)	(kg)
A/B/C-1								
A/B/C-2	DO NOT USE		SEE LOAD RATINGS ON CRANE					
A/B/C-3	DO NOT USE		SEE LOAD RATINGS ON CRANE					
A/B/C-4	DO NOT USE		DO NOT USE					

Dimensions are for reference only and subject to change without notice.



Commander 2000 on Wheel Base



IMPORTANT: Crane DOES NOT rotate when assembled in 5BR20 wheel base.

