

Cabrestante con batería

Modelo DBW

Características

- » Adecuado para aplicaciones de tracción.
- » Instalación rápida.
- » Fácil manejo y alta transportabilidad gracias a su bajo peso y a su maletín de transporte.
- » Ideal para aplicaciones sin alimentación eléctrica.
- » Autonomía de la batería: 20min a carga máxima.
- » Se entrega con batería de repuesto y cargador.
- » Se suministra listo para usar con interruptor de control, cable de acero con gancho de carga, gancho de polea y herramientas.
- » Cumple la Directiva sobre máquinas 2006/42/CE. Se suministra con certificado de prueba, declaración de conformidad CE e instrucciones de uso.

Features

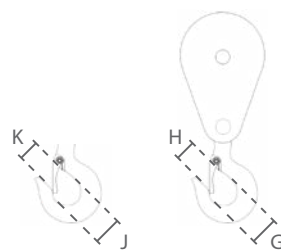
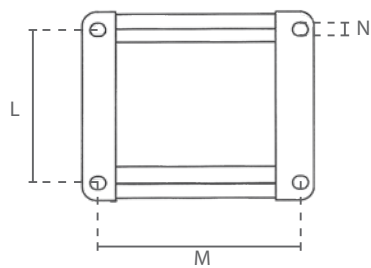
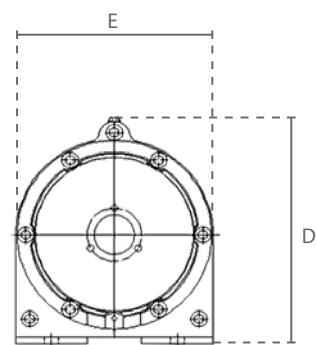
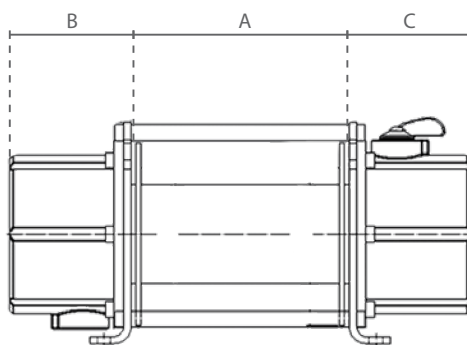
- » Suitable for pulling applications.
- » Fast installation.
- » Easy handling and high transportability due to low weight and carrying case.
- » Ideal for applications without power supply.
- » Battery power: 20min at maximum load.
- » Delivered with spare battery and charger.
- » Supplied ready to use with control switch, steel cable with load hook, pulley hook and tools.
- » Complies with the Machinery Directive 2006/42/EC. Supplied with test certificate, CE declaration of conformity and operating instructions.



| Specificaties / Specifications | | | | | | | |
|--------------------------------|------------|---------------|--------------------|-------------|------------------|---------|--|
| Artikel nummer | Capaciteit | Trek bereik | Max. trek snelheid | Staaldraad | Energie verbruik | Gewicht | |
| Article code | Capacity | Pulling range | Max. pulling speed | Steel cable | Power output | Weight | |
| | ton | m | m/min | m x Ømm | kW | kg | |
| CZ.0.DBW.350 | 0.35 | 13 | 4 | 15 x 5 | 0.28 | 8.2 | |

| Specificaties / Specifications | |
|---|---|
| Toepassing / Application | Treklijer / Pulling winch |
| Voltage / Operating voltage | 18V oplaadbare li-ion batterij / 18V rechargeable li-ion battery |
| Trek snelheid / Pulling speed | Enkele snelheid / Single speed |
| Kabel / Cable | Staal kabel / Steel cable |
| Stuurkabel / Control cable | Standaard ≈3 meter / Standard ≈3 meter |
| Stroomkabel / Power cable | - |
| Behuizing bescherming / Housing protection | IP 54 |
| Besturing bescherming / Control protection | IP 50 |
| Classificatie / Classification | M4/1Am (ISO/FEM) |
| Inschakelduur / Starts per uur / Duty cycle / Starts per hour | 25% / 180 |
| Isolatieklasse / Insulation class | F |
| Bedrijfstemperatuur / Operating temperature | -10°C - +40°C |
| Lading type / Load type | Goederen, mag niet gebruikt worden om mensen te hijsen / Goods, may not be used to lift people |
| Beveiliging / Protection | |
| Schakelaar / Control switch | Schakelaar met noodstop / Pendant control switch with emergency stop button |
| Overlastbeveiliging / Overload protection | Digitale beveiliging / Digital protection |
| Rem / Brake | Mechanische rem, bereikt onmiddellijk remeffect en houdt de lading ook bij stroomuitval stevig vast / Mechanical brake, achieves immediate braking and holds the load in the event of power failure |
| Eindschakelaar / Limit switch | Geen eindschakelaar / No limit switch |

| Draagkoffer / Carrying case | | |
|--|------------------|-----------------|
| Capaciteit | Totale gewicht * | Afmetingen |
| Capacity | Total weight * | Dimensions |
| ton | kg | mm |
| 0.35 | 16.8 | 690 x 440 x 170 |
| * inclusief alle accessoires / including all accessories | | |



| Artikel nummer Article code | Afmetingen / Dimensions | | | | | | | | | | | |
|--------------------------------|-------------------------|-----|-----|-----|-----|----|----|----|----|----|-----|---|
| | A | B | C | D | E | G | H | J | K | L | M | N |
| CZ.0.DBW.350 | 89 | 135 | 118 | 143 | 122 | 26 | 21 | 33 | 26 | 75 | 150 | 8 |