



# VINCA

EQUIPOS INDUSTRIALES



## Hoists

### Manual Stainless Steel hoist

11.1\_manual-hoist-stainless-steel\_en

# Manual Stainless Steel Hoist 9/12 VA

- Completely stainless steel hoist, basic unit \*, load and suspension hook, lower block.
- Load and hand chain made of stainless steel.
- Ensuring maximum protection against corrosion.
- Good protection against humid environments.
- Suitable for clean room environments.



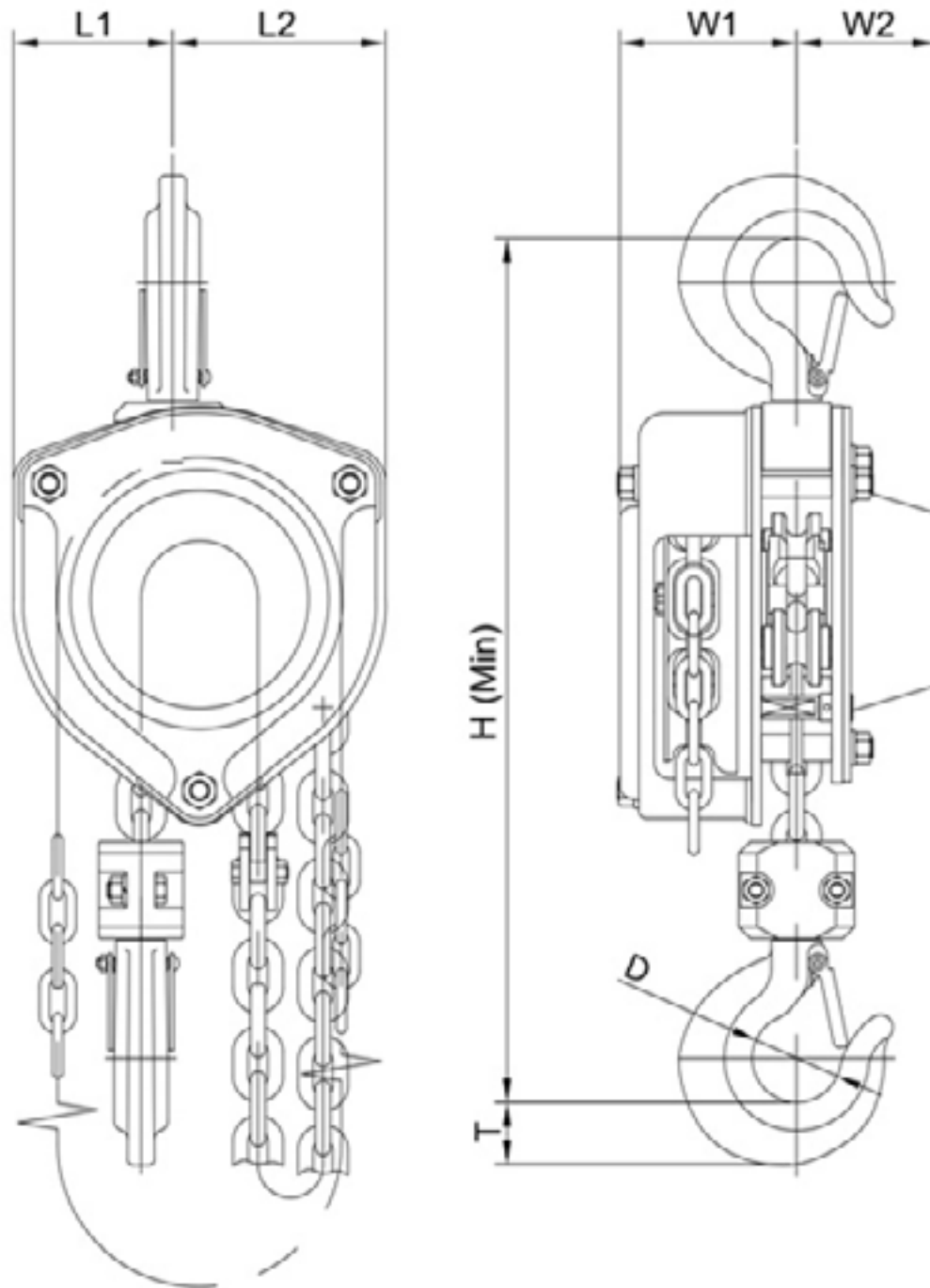
CE

capacity	branch	load chain	elevation for every 30m of hand chain	maximum necessary pulling force	weight	
					model with 3 m of chain	per additional meter of chain
kg		mm	mm	N	kg	kg
500	1	6.3 x 19.1	760	180	12.5	0.86
1000		7.9 x 23	555	240	20.5	1.4
2000	2	7.9 x 23	278	250	38	2.8
3000		10 x 28	218	300	50	4.4

Subject to changes.

Tel: (+34) 93 635 61 20 -  
info@vinca.es - www.vinca.es

# Manual INOX hoist



capacity	measurements in mm						
	H	L1	L2	W1	W2	D	T
<b>500</b>	355	65	85	84.5	62	38	27
<b>1000</b>	425	82.5	110.5	91.8	72.8	46	32
<b>2000</b>	586	64.2	173		78	64	51
<b>3000</b>	655	75.1	201	95.5	80.5		

Tel: (+34) 93 635 61 20 -  
info@vinca.es - www.vinca.es

# Manual Push trolley in Stainless Steel

Ref. 18/16 VA



CE

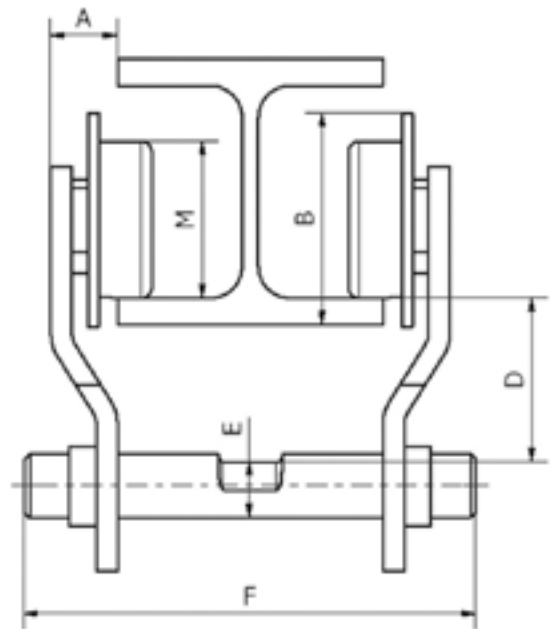
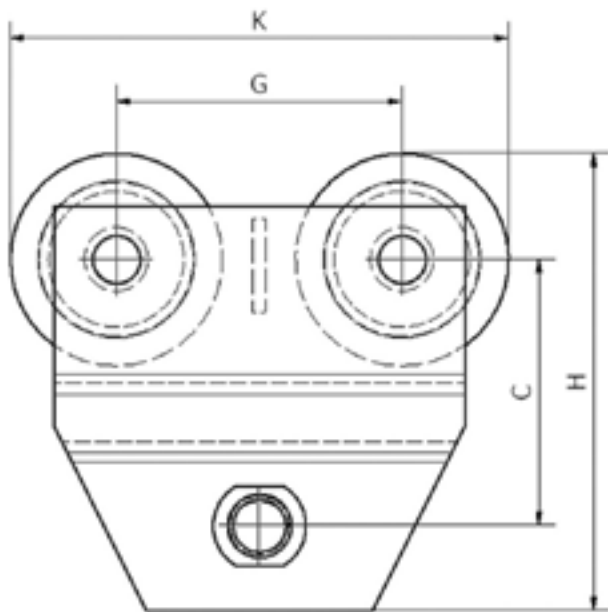
- Completely made of stainless steel.
- Ensuring maximum protection against corrosion.
- Ensuring maximum protection against corrosion.
- Good protection against humid environments.
- Suitable for clean room environments.

capacity	width from - to		weight	
	1N	2N	1N	2N
kg	mm	mm	kg	kg
<b>500</b>	55 - 158	159 - 260	6	6.2
<b>1000</b>			6.2	7

Subject to changes.

Tel: (+34) 93 635 61 20 -  
info@vinca.es - www.vinca.es

# Manual hoist SS



Tel: (+34) 93 635 61 20 -  
info@vinca.es - www.vinca.es

Ref. 18/16 VA

capacity	width of blades from-to	load bar	measurements in mm									
	mm		A	B	C	D	E	F	G	H	K	M
500	55 - 158	1N	21	80	105	60	21	170	107	170	190	60
	159 - 260	2N					22	270				
1000	55 - 158	1N	21	80	105	60	24	180	107	170	190	60
	159 - 260	2N					26	280				

### Manual hoist in stainless steel ZHV

**Ref. ZHV Technical**

**characteristics**

- ZHV completely made of stainless steel: body, hooks, lifting and manual chain.
- The machined chain sprockets and gears provide smoother and more efficient operation.
- 3 meters of standard lift. The manual chain is 0.5 meters shorter than the lifting chain. Other lengths available upon request.
- The compact design of ZHV offers safety along with reduced weight. Ideal for construction and maintenance applications.
- The stainless steel housing solidly protects the chain sprocket, the gearbox, and the cover of the flywheel.

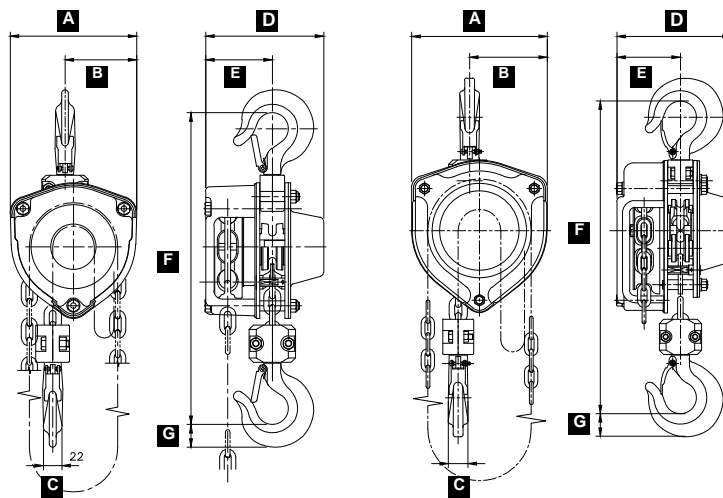
- Upper and lower hook ISO Stainless steel hooks with safety latch.
- CE certified
- Surface treatment: electropolished.

**Options**

- CHV INOX trolley normal headroom (HPN).
- Load limiter

**Material list**

- Hand chain: SUS316.
- Load chain: SUS316L.
- Hook and pulley piece: SUS304.
- Pin and Bush: SUS420J2.
- Covers and plates: SUS304.
- Identification plate: SUS316.



ZHV 500 kg

ZHV 1000 kg

Load (kg)	Measurements in mm							Standard lift height (m)	Length of the manual chain (m)	Lifting chain size (mm)	Ramales	Pulling force required	Weight (kg)
	A	B	C	D	E	F	G						
500	150	85	22	143	81	330	25	2.5	2.0	Ø 6.3 x P 19.0	1	33	12.1
1000	193	110.5	28	165.8	91.8	400	32			Ø 7.9 x P 23.0		35	19.7

Tel: (+34) 93 635 61 20 -  
 info@vinca.es - www.vinca.es

# Manual SS hoist

## Push trolley in stainless steel CHZ

### Ref. CHZ Technical characteristics

- CHZ INOX trolley completely made of stainless steel: end plate, suspension beam, load wheel.
- The CHZ INOX trolley can be used with any type of manual lifting equipment equipped with a hook.
- Push the travel trolley.
- Stainless steel load wheel in the center of the machine for smooth movement.
- Stainless steel loading wheel compatible with all types of I or H profile.

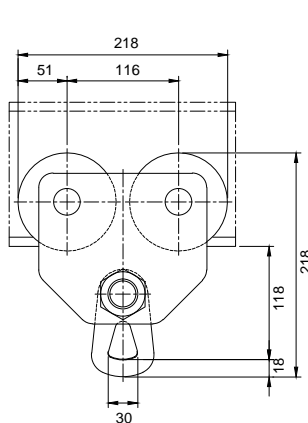
- The bearings are protected against dust and do not require maintenance.
- Serial number on the fixed plate on the frame.
- CE certificate
- Surface treatment: electropolishing.

### Options

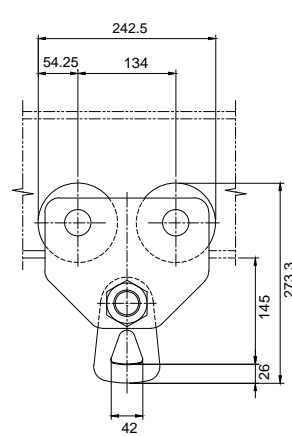
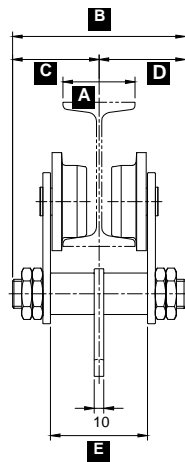
- ZHV INOX manual chain block.
- Adjustment of the beam width.

### Materials list

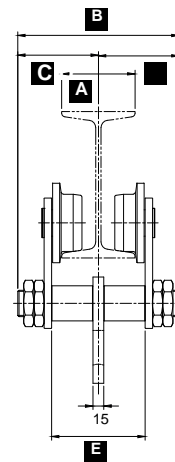
- Plate and Toller: SUS304.
- Bearing: SUS420.
- Identification plate: SUS316.



CHZ 500 kg



CHZ 1000 kg



Load (kg)	Measurements in mm					Min. Distance derail to suspension point	Ancho de Luz (mm)	Minimum radius (mm)	Weight (kg)
	A	B	C	D	E				
500	75	180	90	90	101	118	64	1200	10.5
	100	205	102.5	102.5	126				
	125	230	115	115	151				
1000	100	220	110	110	128	145	82	1300	15.8
	125	245	112.5	122.5	153				
	150	270	135	135	178				

Tel: (+34) 93 635 61 20 - info@vinca.es - www.vinca.es

## VINCA products

- Bridge cranes and gantry cranes
- Jib cranes
- Hoists and winches
- Scissor tables and scissor lifts
- Elevators/lifts for loads (PLT)
- Dock levelers
- Moving dock levelers (RMC)
- Coats furniture
- Wheel-lok (vehicle immobilizer)
- Safety equipment for docks
- Vacuum lifters VACU-LIFT
- Industrial Manipulators
- Pallet Inverters /Tippers
- Levelers NIVELMATIC
- Tilters inclinators
- Skips
- Industrial fans
- Industrial flexible doors, high speed doors
- Cold storage doors
- Fire doors
- Safety gates DOK-GUARDIAN
- Festoon for mobile equipment
- Lifting appliances
- Industrial Radio Controls
- After Sales Service for above equipment

 ATEX classified equipment as option.



# VINCA

**EQUIPOS INDUSTRIALES**

C/ Técnica, 39Pol.  
Ind. Torre Bovera  
08740 St. Andreu de la  
BarcaBARCELONA  
[www.vinca.es](http://www.vinca.es)



### BARCELONA

Tel 93 635 61  
20Fax 93 635 61  
30info@vinca.es

### MADRID

Tel: (+34) 616 91 69  
82madrid@vinca.es

### VALENCIA

Tel: (+34) 647 817  
537valencia@vinca.es

### GALICIA

Tel: (+34) 648 923  
832galicia@vinca.es